

[illegible]

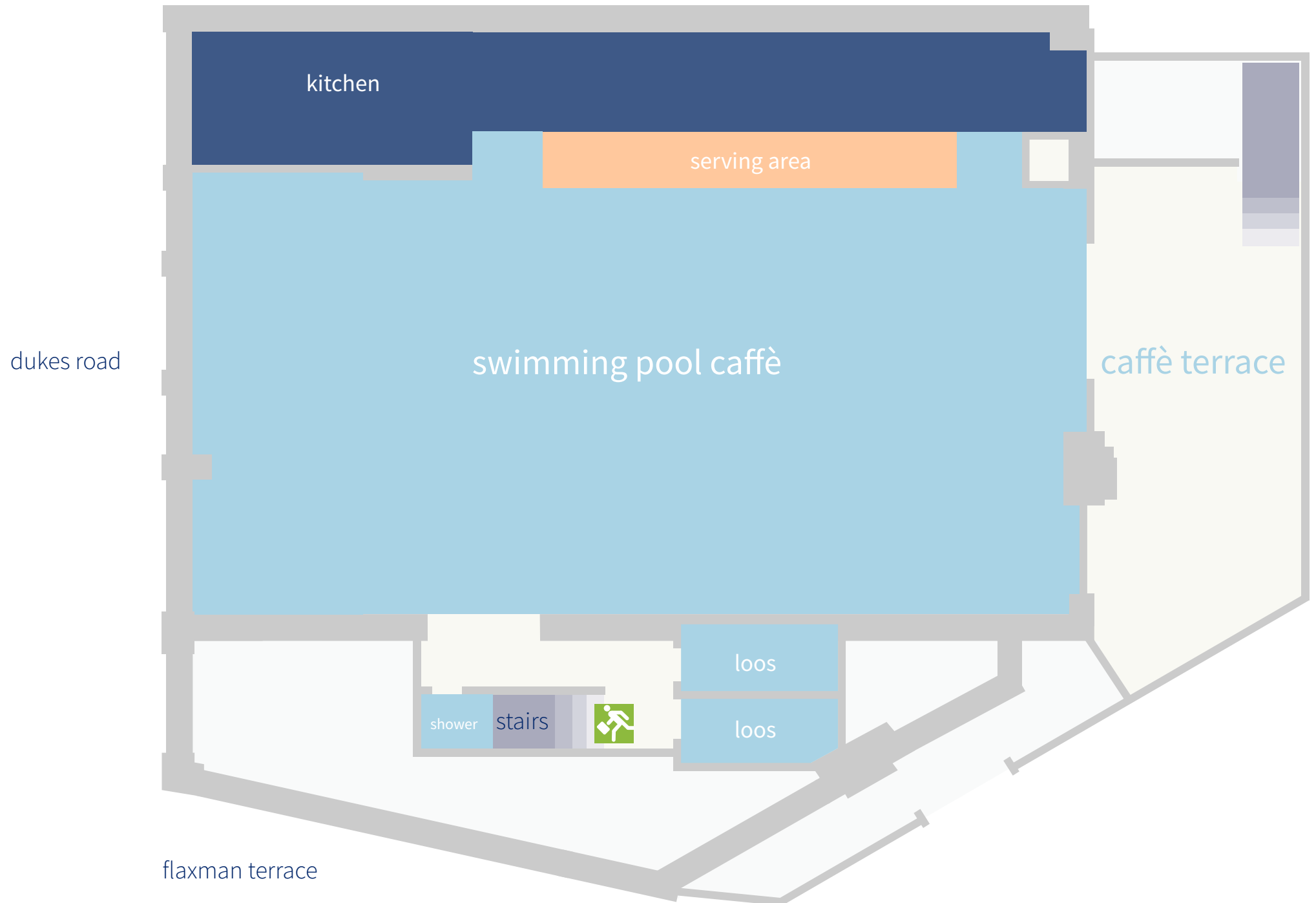


wallacespace **covent garden** 53 parker street first floor





[illegible]





wallacespace **st pancras** ground floor





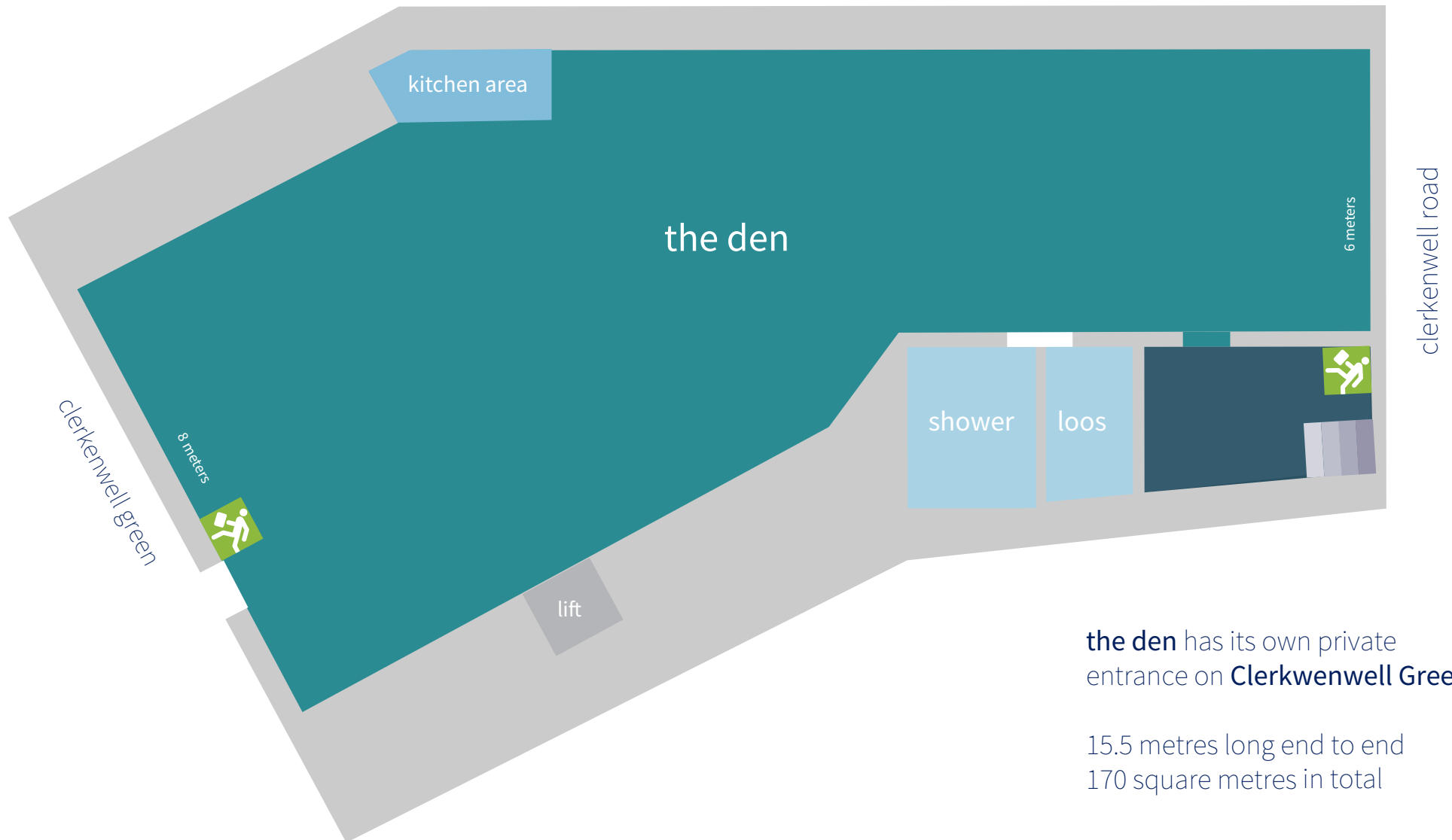




[illegible]

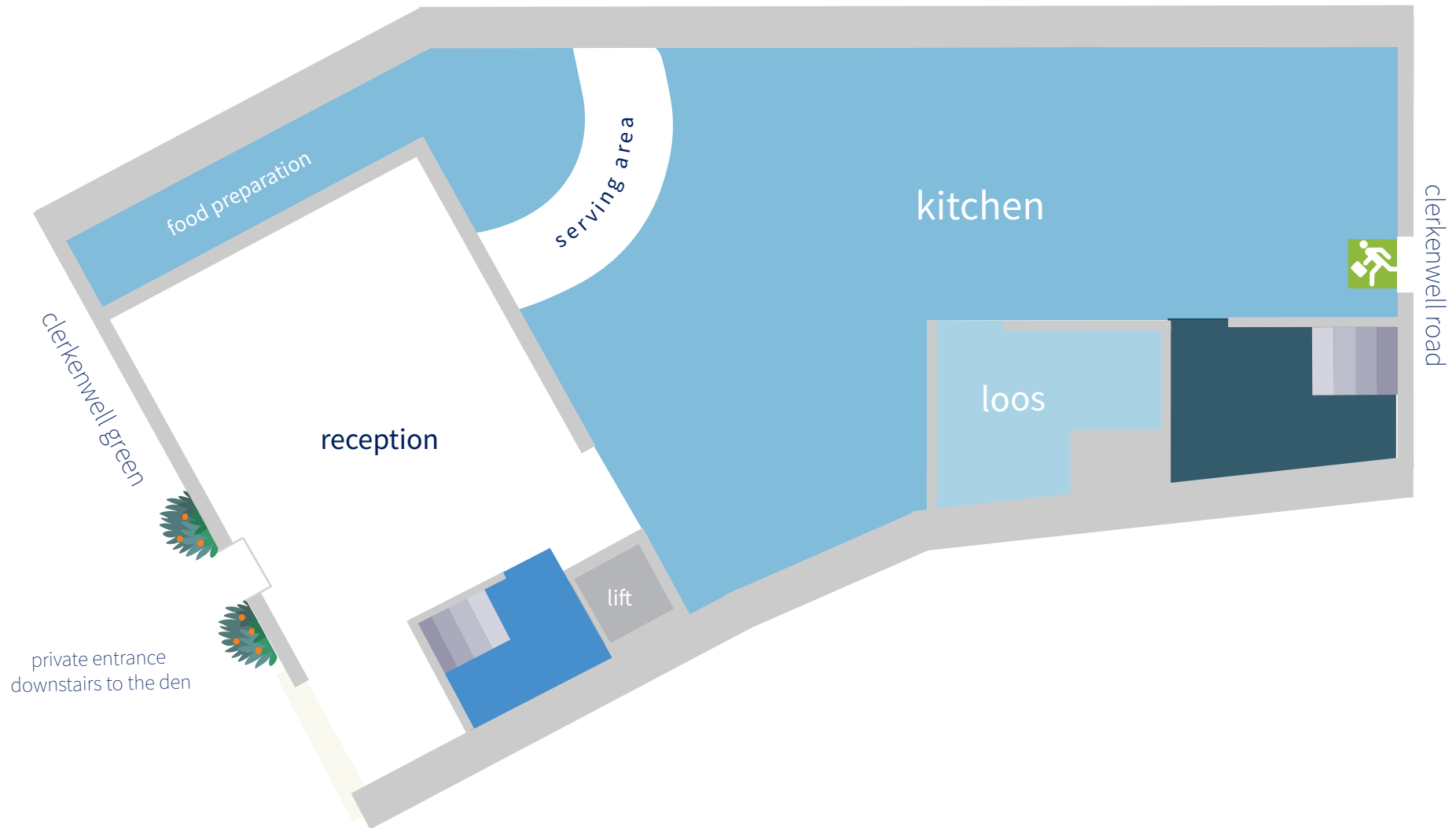


wallacespace **clerkenwell green** lower ground floor



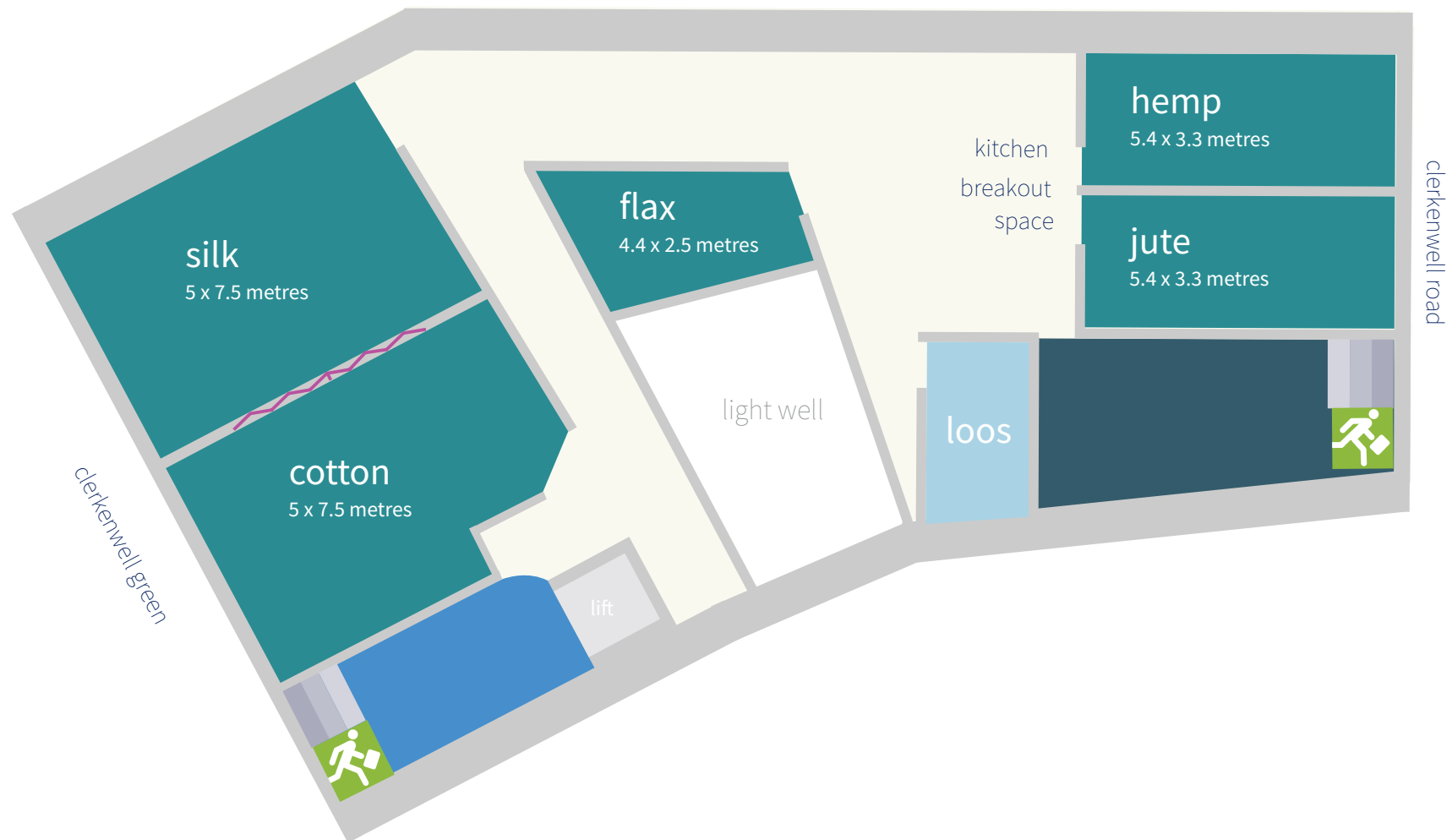
the den has its own private entrance on **Clerkwenwell Green**.

15.5 metres long end to end
170 square metres in total



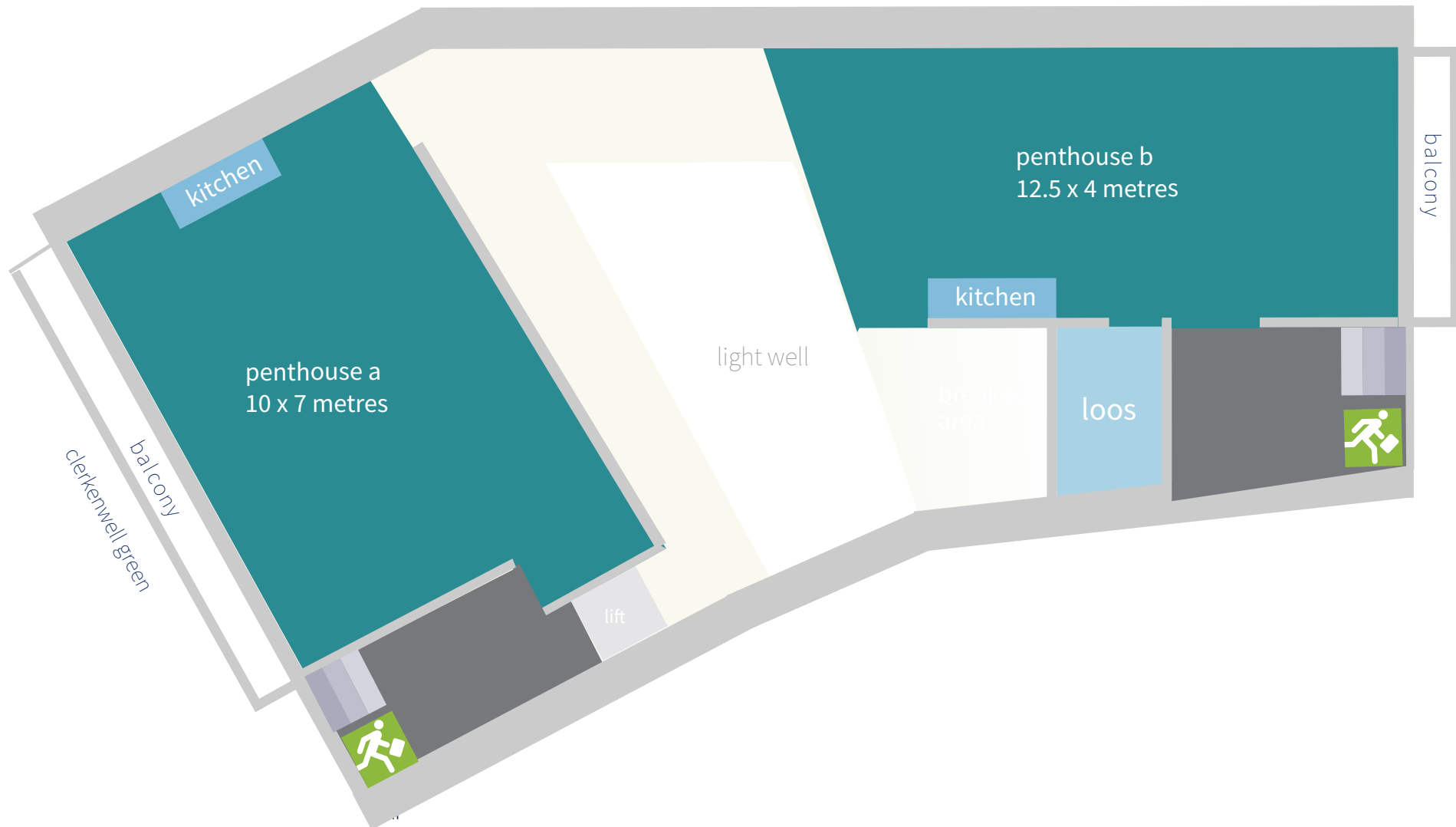








wallacespace **clerkenwell green** fourth floor



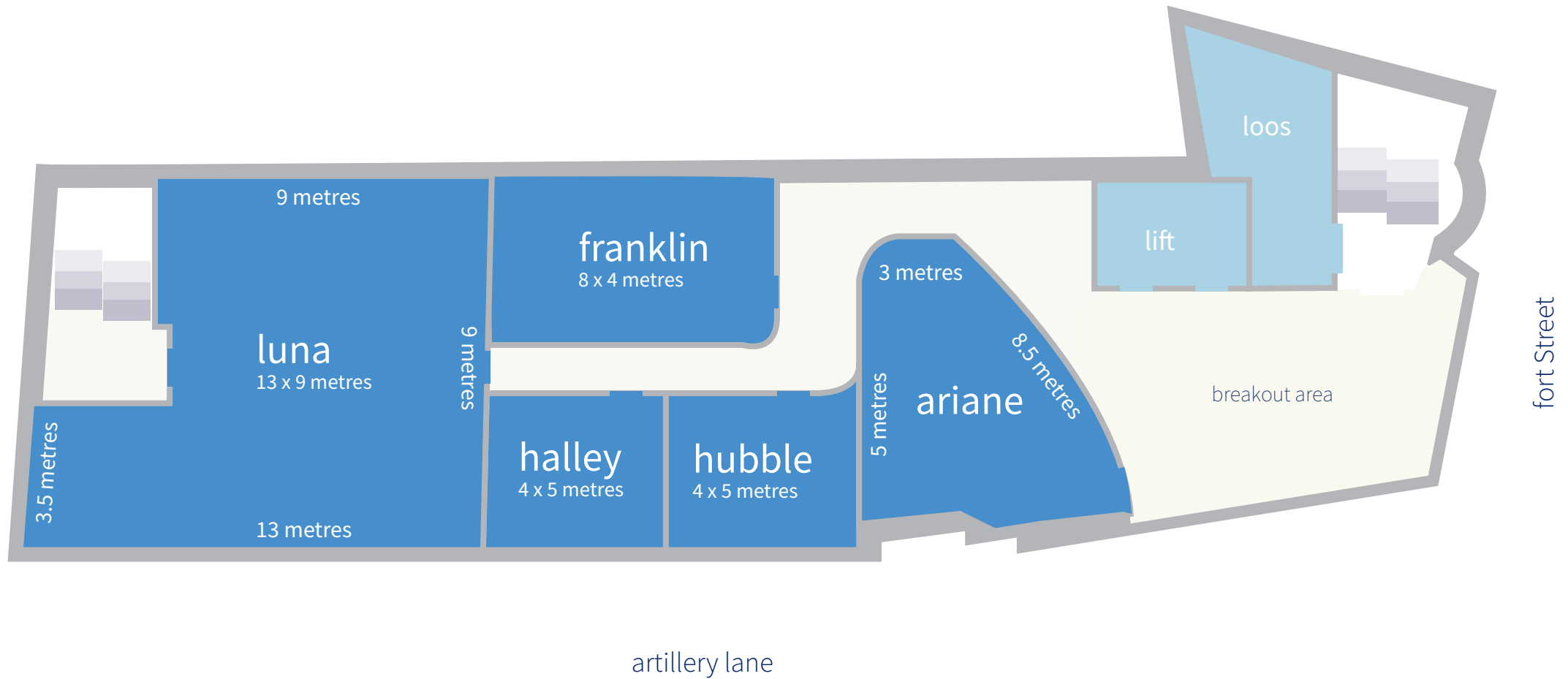


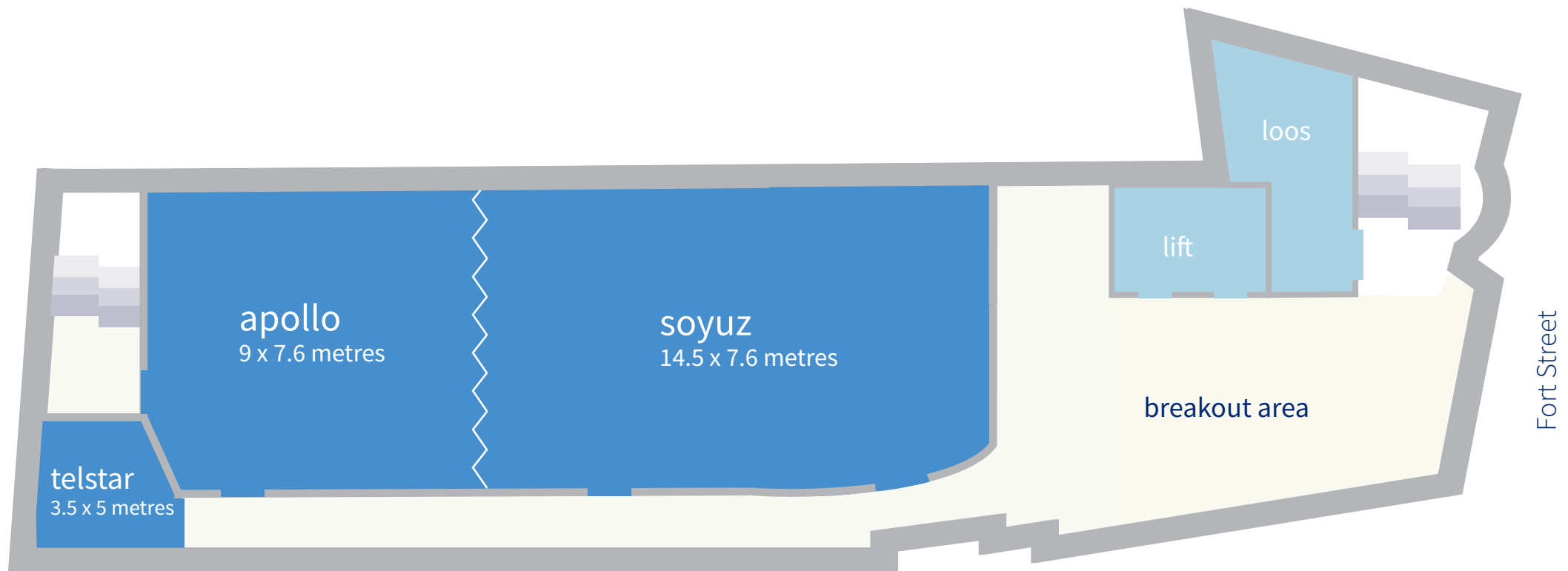
wallacespace **spitalfields** dimensions + capacities

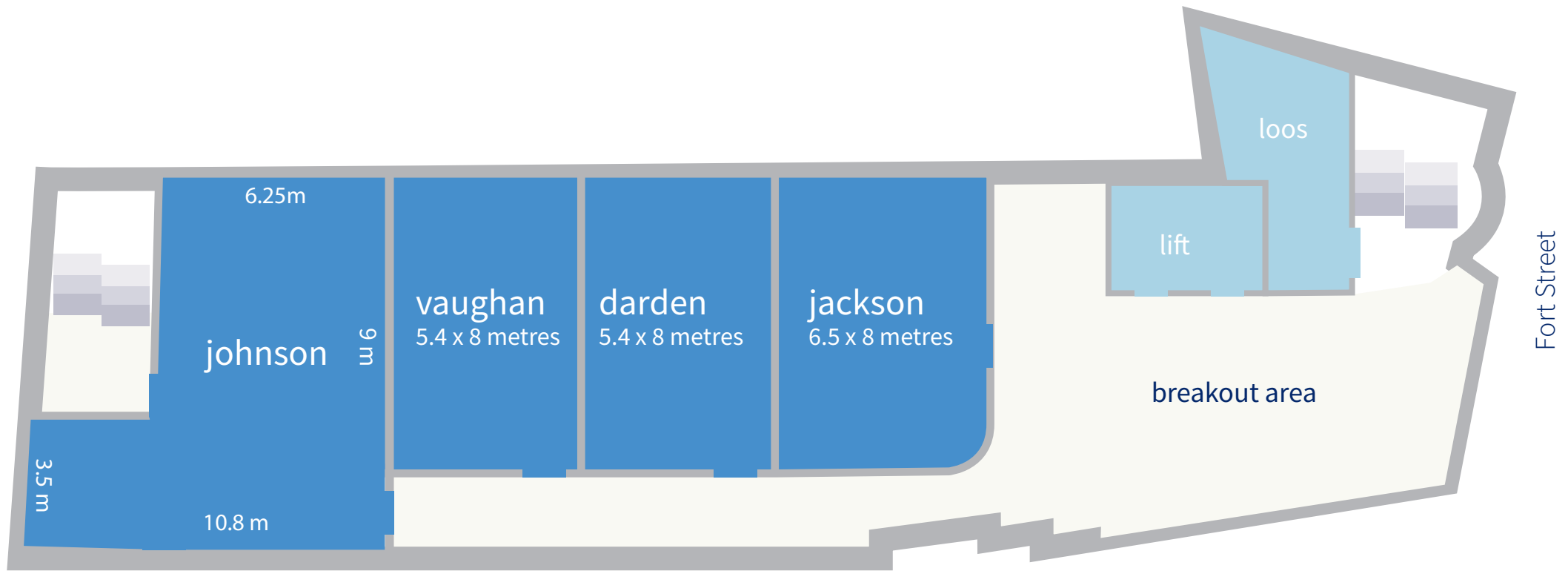
	dimensions	minimum numbers	max. theatre style	max. u-shape tables + chairs	max. boardroom	max. u-shape chairs	max. cabaret	max. soft seating	working space in square metres
1.1 ariane	3.0 x 8.5 mtr	14	40	16	18	20	20	16	41.5
1.2 hubble	4.0 x 5.0 mtr	6	12	0	10	10	0	8	22.5
1.3 halley	4.0 x 5.0 mtr	6	12	0	10	10	0	8	22
1.4 luna	9.0 x 9.0 mtr	40	100	26	22	40	60	35	98.5
1.5 franklin	4.0 x 8.0 mtr	12	30	12	14	16	16	14	31
2.1 telstar	3.0 x 5.0 mtr	4	8	0	8	8	0	6	15.5
2.2 apollo	9.0 x 7.6 mtr	30	80	24	24	28	36	28	71
2.3 soyuz	8.0 x 7.6 mtr	40	150	36	36	54	60	35	110
apollo + soyuz	17 x 7.6 mtr	85	250	54	60	86	120	65	178
3.1 johnson	5.8 x 8.0 mtr	25	60	24	24	36	36	25	94
3.2 vaughan	5.4 x 8.0 mtr	14	26	28	14	24	24	18	42
3.3 darden	5.4 x 8.0 mtr	14	26	12	14	24	24	18	41.5
3.4 jackson	6.5 x 8.0 mtr	18	40	10	20	20	30	20	50

rooftop kichen 6.8m x 28.5m

maximum numbers for dining 100
maximum numbers for a stand up reception 150
maximum numbers for theatre style 150







Artillery Lane

Fort Street

